

**3M Facilities Care and Cleaning Products**  
Hard Floor Care Solutions

A person wearing a blue harness and a grey shirt is operating a yellow 3M floor buffer. The buffer is on a polished floor, and a rainbow-colored light effect is visible above it. The floor is divided into a white section and a dark purple section.

Put a  
**High Gloss**  
on your bottom line

**3M**



3M Floor Cleaning Products

Saves time  
Saves money

### You can trust 3M to save you time and money

Clean shiny floors speak volumes about a company, but can be costly to maintain. That's why it pays to choose 3M. We've been at the forefront of cleaning innovation for over 50 years, and we continue to lead the way in cleaning solutions designed to be simple, efficient, durable, cost-effective and with a low environmental impact.

With that heritage, you can rely on our brand-leading floor care products to do more than just clean, shine and protect floors without the need for harmful chemicals – they go on working for longer too, enhancing your business as well as your underfoot surfaces. So, whether you want to revive tired old floors or protect brand new ones, you get longer-lasting maintenance and protection at a lower total cost.

Our product range doesn't stop at keeping floors looking good. It's there for the protection of staff, customers and suppliers as well – in fact, anyone who enters your buildings. Our portfolio includes solutions which are there to guard against slipping, harmful chemicals and even wear and tear on the body.

**So, whatever the surface, however challenging the task, you can rely on our products to do the job harder and faster – and to cut your costs, whether you do it in-house or outsource it**

## RESTORE

With 3M, you don't need to be a specialist to restore your floors

Even the hardest floors can rapidly start to suffer from wear and tear, and that can have an impact on the way customers and staff see a company. The 3M range of cleaning products is designed to make any kind of floor look as good as new, at a surprisingly low cost. No need to invest in training, equipment or specialists – you can make them look as good as new all by yourself.

### **NEW** 3M™ Trizact™ Diamond HX Discs

**3M™ Trizact™ helps turn dull, scratched stone floors into beautiful shiny ones, simply by using standard floor cleaning equipment**

- Refurbish your own floors – no need to contract out to specialists
- Faster than traditional diamond grind
- Dust-free process
- Cut up to 85% off your costs
- Precisely-patterned composite abrasive structures give consistent cutting action throughout product life





# WHICH 3M PRODUCT SHOULD YOU USE TO RESTORE YOUR FLOORS?

## 3M FLOOR PADS

3M floor pads strip faster, clean harder, shine brighter and last longer. Our range includes products for almost any task, whether it's routine or specialist

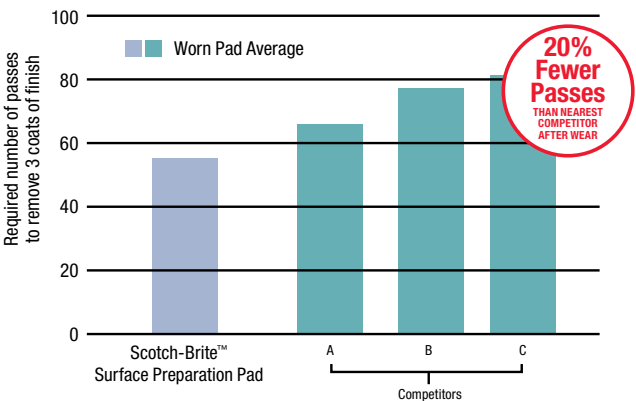
### NEW 3M™ Scotch-Brite™ Surface Preparation Pad

#### 3M specialist deep cleaning and stripping floor pad

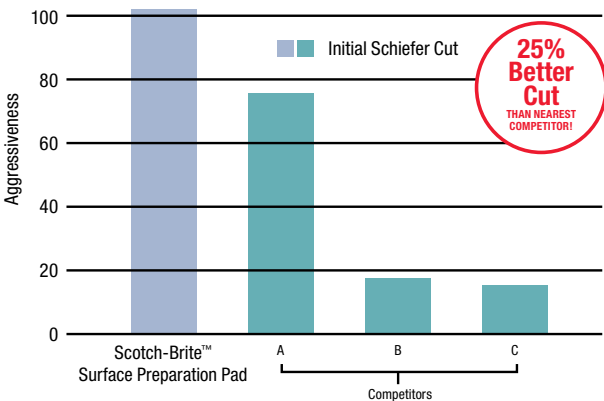
- Thorough deep cleaning: lifts stains and tackles hard-to-clean floors, deeper clean than black pad without harshness or scratches
- Improve productivity - faster than any black pad
- Remove old varnish, coatings and erase any scratches
- Usable on any floor polishing machine
- Improve safety - no slippery residue from stripper, no stripper cleanup, no chemical contamination
- No chemical strippers needed - just neutral cleaner or water



Scotch-Brite™ Surface Preparation Pad



Scotch-Brite™ Surface Preparation Pad

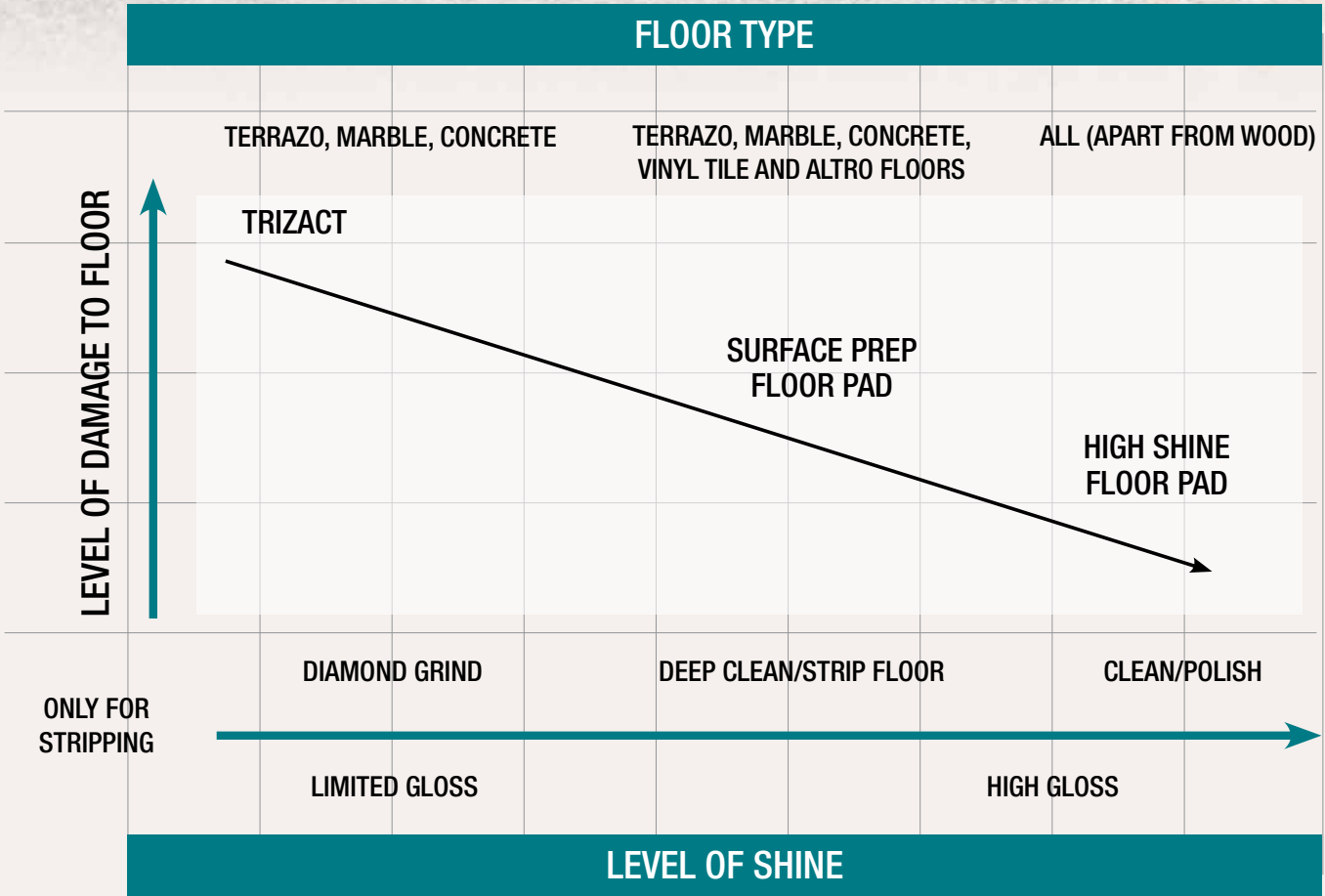


### NEW 3M™ Scotch-Brite™ High Shine Floor Pads

#### Clean and create a high shine on marble, terrazzo, plastic and concrete floors in just one process

- High Shine technology supercedes the 3M Diamond floor pad range
- Double Sided Pad - Works 3 times longer than existing single-sided floor pads, lowering costs
- No chemicals required, just water or neutral cleaner

New innovative floor pad not only effectively cleans but also polishes the floor during daily cleaning





# PROTECT

## Cleaner, shinier, better-looking

Keeping floors clean is about more than simply cleaning off dust, dirt and spillage that could cause falls. It's also about making sure it keeps the look and shine it deserves, with less likelihood of scuffs, black marks, stains and scratches. The 3M portfolio of products make it easy to keep floor surfaces protected both day to day and long-term, resulting in reduced maintenance and susceptibility to the risk of litigation, allowing jobs to be done in less time and at lower cost to your OpEx budget.

### **NEW** 3M™ Scotchgard™ Resilient Floor Protector

Scientifically designed to protect and enhance the natural appearance of floors with less maintenance and fewer chemicals

- No more stripping – easy and fast to apply
- Tough long-lasting protection
- Improve productivity
- Just 2 coats for initial application; 1 coat for future applications
- Hardens 40% faster, also reducing the risk of early damage
- Low odour
- Twice as resistant to abrasion than traditional floor finishes\*

\*under laboratory conditions



### 3M™ Scotchgard™ Stone Floor Protector

Just two coats is enough to give you a clean, glossy floor that's up to 5 times more resistant to scuffs, scratches and stains

- Long-lasting and tough, keeps protecting for up to a year with minimal maintenance
- Particularly good for preventing dirt ingress in porous stones such as concrete
- Restore floor once and protect to extend the life of your high gloss floors
- No need to strip or deep scrub: simply clean and recoat



### 3M™ Easy Shine Applicator Kit

The rapid, easy way to apply the Scotchgard™ range of products

- More consistent
- Faster to apply than mop and bucket



### 3M Entrance Matting

80% of floor dirt is tracked into buildings on the soles of shoes. 3M™ Nomad™ Aqua Series Textile Entrance Matting stops it at the door, keeping floors cleaner, safer and easier to maintain. It also lasts a long long time – up to 5 years.

You can be sure that, whatever the volume of people coming into your building, 3M has a range of products to suit



# MAINTAIN

## No-compromise cleaning

Maintaining floors can be a highly labour intensive activity, in many cases incurring high expenditure. At 3M, we believe that maintenance should be effective and at the same time rapid and easy to carry out, with minimal use of, and exposure to, chemicals. This is reflected in our portfolio, designed to provide outstanding results with ease and in safety so you know you're using the best pads for the job.

## 3M FLOOR PADS

### Why choose 3M Floor Pads?

Every 3M Floor pad is made to high standards, with ongoing innovation and technological advancements making sure they continue to offer the very best in effectiveness. This means you can be certain they'll cut down on time, reduce the need for replacement pads, minimise machine wear and tear – all of which make for less strain on your budget.

Here are just some of the details that set us apart from the competition and make us the no. 1 supplier worldwide;

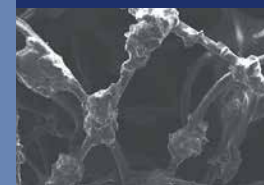
- Uniform distribution of mineral abrasives throughout, not just on the surface, for better, longer life
- Individually separated and coated fibres for more consistent results
- Each floor pad is engineered for a specific maintenance task
- Uniformity and quality helps produce:
  - Better results on your floors
  - Less operator fatigue
  - Longer useful pad life
  - Less machine wobble and vibration

### All floor pads are NOT created equally

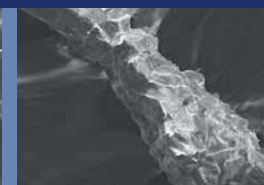
The differences between floor pads may seem small. But when added up, they can make a big difference to your bottom line in terms of productivity and labour costs. Consider the following attributes of 3M floor pads that help set them apart from the competition.

Uniform distribution of mineral abrasives throughout pad – not just on the surface – offers impressive performance and a long, useful life.

3M Floor Pads

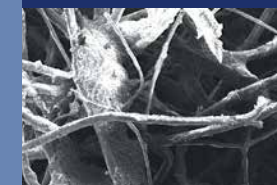


OUTSIDE



INSIDE

Other Floor Pads

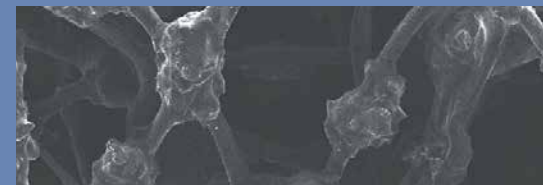


OUTSIDE

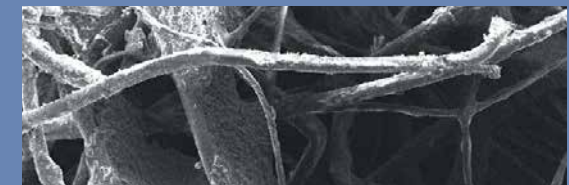


INSIDE

Individually separated and coated fibers help produce more consistent results



3M Floor Pads

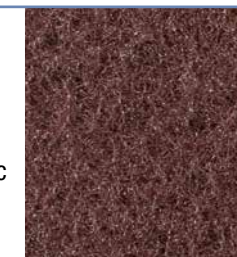


Other Floor Pads

## PRODUCT RANGE

### Brown Floor Pad

Ideal for dry stripping of protected floors or wet stripping with any convenient stripping solution. Can also be used with an automatic scrubber-drier to maintain heavily soiled industrial floors



### Blue Floor Pad

Use wet for regular maintenance of unprotected floors. Recommended for dry stripping soft floors; also suitable for dry scrubbing of heavily soiled floors and spray cleaning medium soiled floors



### Black Floor Pad

Use for wet cleaning of old soiled floor finishes or heavy duty cleaning



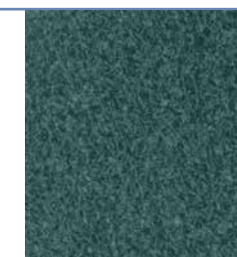
### Red Floor Pad

The choice for routine spray cleaning and protected floors; cleans when damp, buffs when dry. Also suitable for light scrubbing



### Green Floor Pad

Use for daily scrubbing of unprotected hard floors. Also suitable for preparing hard floors and for stripping soft floors



### White Floor Pad

Dry polishing and buffing of unprotected floors with standard speed rotary floor machines, or for light spray cleaning







### NEW 3M™ Graffiti Removal Range

**Whatever the substance, whatever the surface, you can rely on 3M's new range of graffiti removers to clean harder, faster and safer**

- Multipurpose – effective on aerosol spray paint, permanent markers and emulsion paint
- Low hazard – no NEP or NMP
- High performance – quick penetration and rapid breakdown of graffiti
- Evaporates more slowly, increasing efficiency, performance and reducing costs
- Low odour unlike traditional chemical removers
- High flash point for low flammability
- Low environmental impact – biodegradable and REACH-compliant

### 3M™ Floor Sweeper

**The ideal selection for rapid cleaning and dirt removal from hard floors and carpets, reducing the need for brooms and vacuum cleaners**

- Quick, lightweight and easy
- Cuts down on time and noise
- Ideal for daytime cleaning without disrupting work or traffic
- No trailing cables to create a safety hazard
- Perfect for noise-sensitive environments



### NEW 3M™ Easy Trap Dusters

**The most efficient way to dust the floor**

- Traps and holds 6 times more dust, sand, dirt and hair
- Works in wet environments and on most horizontal surfaces
- Non-woven, three dimensional web
- 3M proprietary fibres
- Two sided disposable sheets
- Low drag reduces fatigue



### NEW 3M™ Melamine Floor Pads

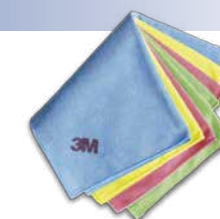
**Clean up to 5 times more floor than any other melamine pad on the market**

- Ideal for ceramic tiles and other surfaces where scratches need to be avoided
- Cleans most dirt and marks with water alone



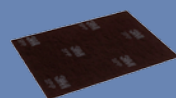
### 3M™ Scotch-Brite™ Microfibre Wipes

Microfibre technology has transformed the cleaning industry in recent years, delivering superior cleaning and exceptional standards of hygiene without the need for detergents and chemicals. The 3M Range is suitable for use on a wide range of surfaces – even the most delicate ones – they can be washed and tumble dried repeatedly so are highly cost effective



## 3M™ DOODLEBUG™ CLEANING SYSTEM

**Get into corners and edges where machines can't**



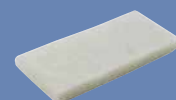
#### 3M™ Doodlebug™ Surface Preparation Pad:

This innovative SPP pad is highly effective at stripping floors for use with the Doodlebug Holder. It is more efficient at removing floor polish than current black pads without harshness or scratches. Ideal for lifting stains and tackles hard to clean floors



#### 3M™ Doodlebug™ Pad Holder 6474:

Attaches to brush/broom handle and swivels to clean hard-to-reach areas like baseboards, stairs, and under fixtures and furniture



#### 3M™ Doodlebug™ White Cleansing Pad 8440:

Specially designed for delicate surfaces and light cleaning such as windows, ceramic-tile walls, floors and swimming pools



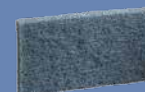
#### 3M™ Doodlebug™ High Productivity Stripping Pad 8550:

A very aggressive pad for extra-tough jobs like removing stubborn black marks, rust stains and heavy build-up of dirt or finish



#### 3M™ Doodlebug™ Brown Scrub 'n Strip Pad 8541:

For tough jobs like removing finish and wax from baseboards, floor edges and stairs



#### 3M™ Doodlebug™ Blue Pad 8242:

For medium-duty cleaning tasks, such as cleaning stairs



# PREVENT

## Staying safe from front door to exit

Keeping people and premises safe starts even before people walk in through the front entrance, especially these days when a small incident can result in a large claim. Our prevention products ensure that you can protect people from slips, falls and chemical spills, and maximise hygiene in the places where it matters most.

### Entrance matting

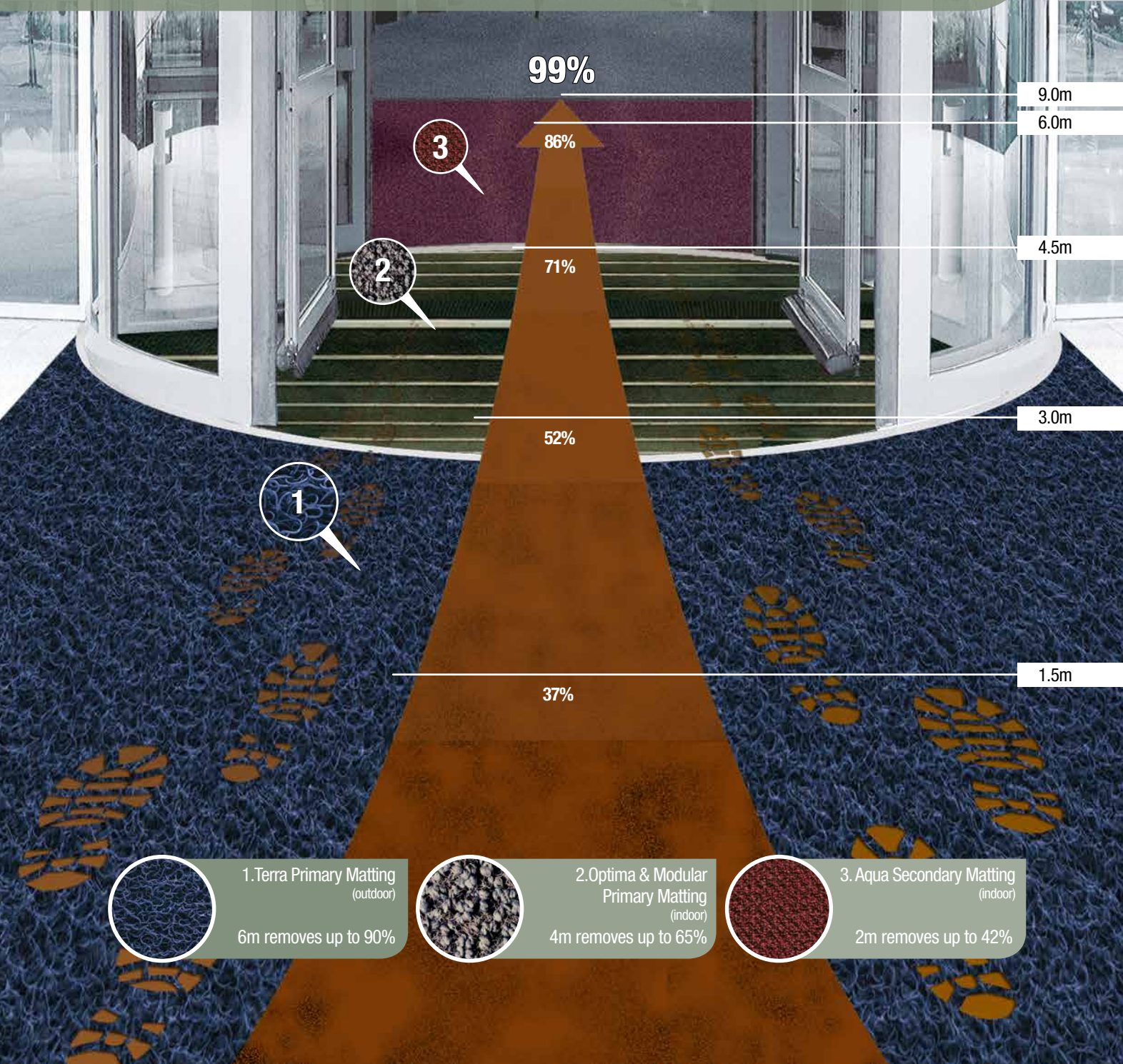
Moisture and liquid need to be trapped as soon as possible, either outside the building or in the first few feet at the entrance. The range of entrance matting from 3M™ offers you the flexibility to place them where you want them.

9000 workers suffered a serious injury as a result of a slip or trip

Slips & trips in the work place account for 24% of injuries resulting in an absence of over 3 days

30,000 slips and trips reported every year that's 82 a day!

Data Source: HSE Slips trips and falls from height 2011/2012

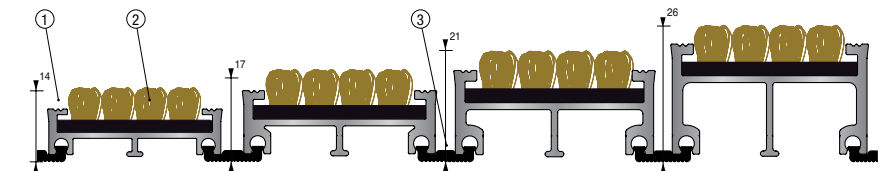


## 3M™ Nomad™ Optima +

**Primary Matting (Outdoor):** An excellent combination of both dirt and water removal

- High performance Nomad Aqua 85 textile infills
- Excellent water absorption
- Soil scraping aluminium action
- Available in 3 new formats to provide a solution for any organisation

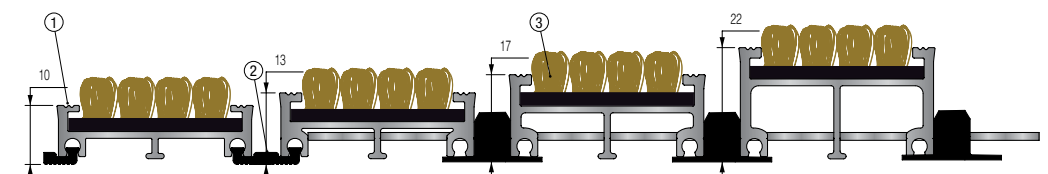
### Nomad Optima + Open Matting – Extreme traffic volumes



- Durable open construction for recessed well applications
- Stainless steel rope allows the matting to be rolled back for cleaning
- Open construction helps increase water capacity

1. Height (available in 10mm, 13mm, 17mm and 22mm depths) 2. Textile infill 3. Wire rope and 7mm wide PVC spacer

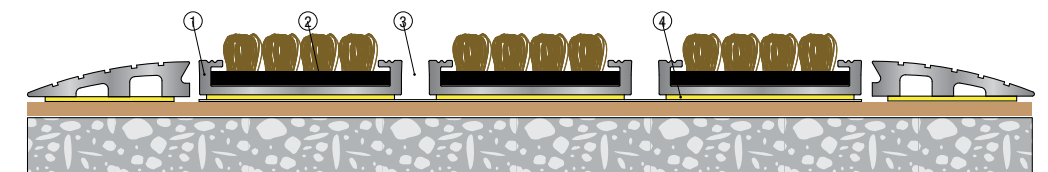
### Nomad Optima + Closed Matting – Extreme traffic volumes



- Durable closed construction for recessed well applications
- Easy to clean even while located in the well
- Helps reduce cleaning costs

1. Height (available in 10mm, 13mm, 17mm and 22mm depths) 2. 10mm wide connector 3. Textile infill

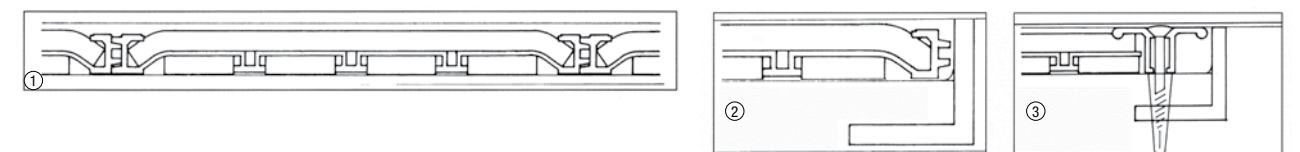
### Nomad Optima + Slim Matting



- Just 7.5mm in height (excluding matting)
- For use in recessed wells or as a drop down solution
- Flexible underlay
- Closed construction prevents dirt from falling into the well
- Easy to clean while located in the well
- Helps reduce cleaning costs

1. Height 2. Textile infill 3. 6mm Gap 4. Flexible underlay

### 3M™ Nomad™ Optima 8800 + Open Matting - Extreme traffic volumes



- Easy to install interlocking aluminium planks in two lengths of 1500mm and 2200mm – modular approach means fast installation
- No templating requirements makes installation into square, oblong or irregular wells easy
- Durable open construction for recessed well applications

1. Profile of aluminium structure containing 3M™ Nomad™ Aqua 8400 Infills. Interlocking design holds matting firmly in place and prevents vertical movement 2. Edge detail where matwell has been designed to accommodate a full number of sections 3. Where necessary a T section is used to finish cut edges



## Why choose 3M™ Nomad™?

Traditional pile matting lets dirt and moisture sit on the surface, ready to be tracked into the building. 3M™ Nomad™ Range uses a patented dual-fibre loop system instead. This scrapes off soil and absorbs water, then traps it securely within the mat's open structure. Your entrance matting not only looks good, it prevents dirt and liquid from coming into the building.

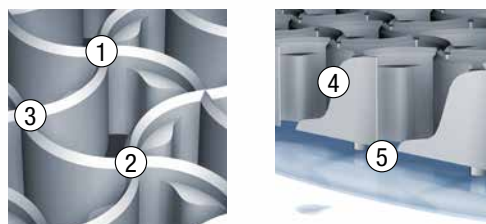
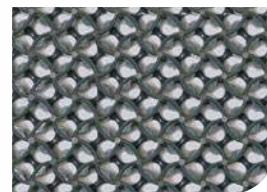
### 3M™ Nomad™ Modular

High performance drop down matting that combines flexible design options and easy on-site installation; available in two tile versions (300mm x 300mm x 17mm)

#### 3M™ Nomad™ Modular 8300 Matting

Scraping surface uses unique triangular multi-angle scraping blades to maximise soil removal; large open pockets maximise capacity. The tiles clip together and are locked in place to keep the tiles connected:

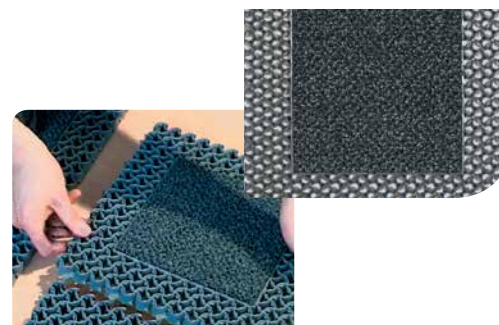
- Multiple angles and triangular shaped top optimise dirt scraping
- Plenty of room for dirt particles to be stored
- 'Heel steps' to prevent heel trapping



1. Several angles to "attack" the dirt on the shoe sole
2. Plenty of room for dirt particles to be stored
3. Triangular shaped top for thorough scraping
4. Construction incorporates 'heel steps' to prevent heel trapping
5. Good drainage due to the 2mm "feet" positioned everywhere below the mat

#### 3M™ Nomad™ Modular 8900 Matting

Combines dirt scraping with large central textile inflill of 3M™ Nomad™ Aqua 85 matting. The tile scrapes, as well as removes and holds moisture. Modularity to create your own design



### 3M™ Nomad™ Aqua Secondary Matting (Indoor)

Unique 3-layer construction is permeable and water-resistant, for efficient water absorption and drainage

- Dual loop fibre
- Tested to the equivalent of 1.8 million crossings a year for 40

#### 3M™ Nomad™ Aqua Series 45

New generation drop down entrance mat with patented construction allowing good water absorption and backed with flexible slip resistant PVC or can be very easily bonded and edged

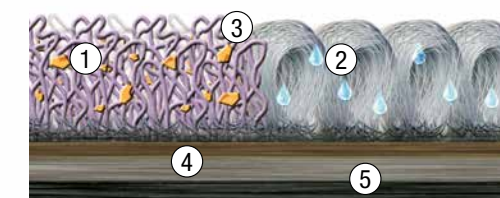
- Low traffic
- Indoor use



#### 3M™ Nomad™ Aqua Series 65

New generation drop down entrance mat with patented construction allowing good water absorption

- Medium traffic
- Indoor use and/or in recessed well



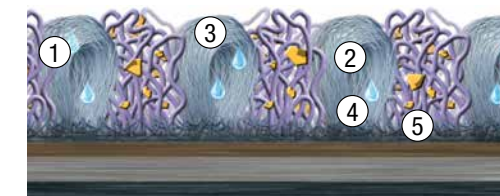
1. Large fibres to remove dirt
2. Small fibres to absorb excess water
3. Arranged in a checked pattern
4. Middle layer draining system
5. 100% PVC-free rolls – over 50% reduction in PVC for edged mats



#### 3M™ Nomad™ Aqua Series 85

New generation drop down entrance mat with patented construction allowing excellent water absorption

- High traffic
- Indoor



1. Large fibres to remove dirt
2. Small fibres to absorb excess water
3. Loops arranged in an attractive random pattern to hide more soil
4. Middle layer draining system
5. 100% PVC-free rolls – over 50% reduction in PVC for edged mats





# SPECIALIST MATTING

3M also has a range of mats that have been specifically created to overcome a number of specialist issues, such as wet areas (saunas, swimming pools), anti fatigue for production sites and anti contamination mats for clean working areas.

## 3M™ Nomad™ Terra Primary Matting (Outdoor)

Made from durable material, 3M™ Nomad™ Terra entrance matting is available in a variety of styles to handle different traffic levels

- Open web construction
- Flexible coils to brush shoe soles
- Place them inside, outside or in recessed wells
- Attractive matt finish in a range of colours
- Available without backing to aid drainage in outdoor areas or with vinyl backing to protect floors indoors
- High-tech product coating adds durability
- Highly crush resistant vinyl



## 3M™ Contamination Control Mat

A disposable, dust collecting floor mat designed to help protect areas where cleanliness and hygiene are critical factors

- High tack surface removes dust and small particles from shoe soles and trolley wheels
- Peel off one layer to expose the next
- Lay onto any clean surface with no edging or frame
- 40 sheets coated with a pressure-sensitive adhesive



## 3M™ Safety-Walk Wet Area Matting 1500

An unbacked, unwoven open matting made from continuous vinyl filaments

- Use as a comfort cushion in wet area applications
- Suitable for barefoot or shoe traffic
- Overall thickness 9.0mm



## 3M™ Safety-Walk Wet Area Matting 3200

Flexible open mesh structure allows water to run through so the surface stays drier than the surrounding area

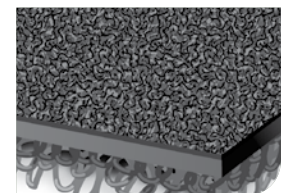
- Comfortable for bare feet
- Formulated for resistance to chlorinated water, body oils, fungus, mildew and UV radiation
- Overall thickness 6.0mm



## 3M™ Safety-Walk Cushion Matting

Reduces leg and back fatigue by distributing cushioned support across the bottom of the shoe

- Flat topped vinyl anti-fatigue matting
- Textured top helps improve traction and clean up of debris and liquid
- 5270E Available with edging to allow wheeled traffic. Oil and grease resistant; suitable for heavy duty foot traffic environments
- 3270E Oil and moderate chemical resistance; suitable for heavy duty foot traffic environments





## ANTI-SLIP TAPES



### 3M™ Safety-Walk™ Anti-Slip Tapes

A durable, slip resistant surface for a large variety of applications

- Abrasive particles bonded by a tough, durable polymer, in most cases to a stable plastic film
- Reverse side coated with a rubber based pressure sensitive adhesive covered by a removable protective liner

#### Coarse

Large abrasive particles; effective anti-slip surface for more demanding applications

#### General Purpose

Abrasive particles; effective anti-slip surface in most shoe traffic applications granulate coating provides a comfortable, hygienic, slip-resistant coating. Available in Medium and Fine surface textures

#### Conformable

Abrasive particles bonded to an aluminium foil to conform to irregular surfaces such as tread plates on stairs



## SPILL CONTROL

3M Sorbents help ensure your workplace is clean and reduce damage to the environment. Suitable for use in a wide variety of applications, from simple maintenance to emergency clean-up of petroleum or chemical spills.

### Types of Sorbents

#### 3M™ Maintenance Sorbents

Absorb water, oil and other industrial fluids cleanly, safely and efficiently

#### 3M™ Chemical Sorbents

Very high absorption capacities and suitable for absorbing a wide range of liquid – even aggressive acids and alkalis – making them the choice for hazardous spill control

#### 3M™ Oil Sorbents

Repel water and absorb oil, making them ideal for oil spillages where water may also be present

### Different Formats of Sorbents

Rugs  
Minibooms – Pillows  
Multi-format  
Pads and rolls

### Hazardous Response Kits

Contains 3M Chemical Sorbents carefully selected to deal with specific hazardous spills:

- Available in 5 configurations

### Tanker Spill Response Kits

The modern and effective way to clean up spills, particularly those from liquid spill deliveries

- Easily conform with the Road Traffic  
(Carriage of Dangerous Substances in Road Tankers and Tank Containers) Regulations 1992





# Superior products

you can rely on

3M Building and Commercial Services' mission is to deliver superior cleaning and protection solutions for facilities, assets and people, increasing safety and productivity in critical environments. Across the globe we are depended upon each and every day for knowledge, integrity and service. We purposefully pioneer, learn and grow in the quest to realise our full potential and to lead our industry.



Building & Commercial Services  
3M United Kingdom plc  
3M House  
28 Great Jackson Street  
Manchester M15 4PA  
Phone: 0845 601 5499  
Website: [www.3M.co.uk/Facilities](http://www.3M.co.uk/Facilities)  
Email: [commcareuk@mmm.com](mailto:commcareuk@mmm.com)

3M Ireland Limited  
The Iveagh Building  
The Park  
Carrickmines  
Dublin 18  
Phone: 01 280 3555  
Fax: 01 280 3849

16611  
Please recycle. Printed in UK.  
© 3M 2013. All rights reserved.

AC101